

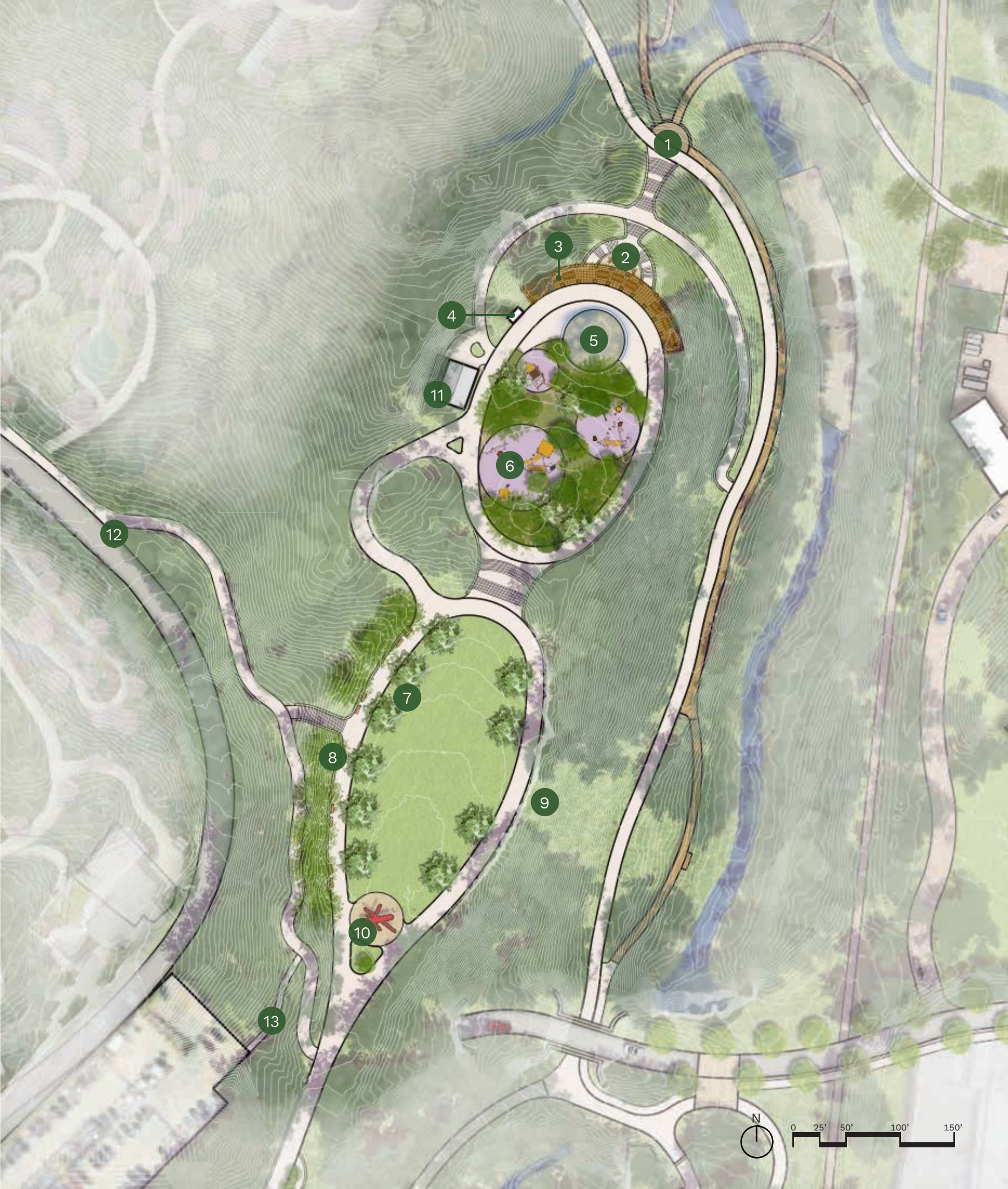
# The Promenade and Legacy Fountain

The Promenade and Legacy Fountain lawns, also sometimes referred to as the Greenswards, were built in 2010 in the Northwoods area of Piedmont Park. Although they provide some respite from the busier areas of the rest of the park—and host public events—many users, especially infrequent visitors, are unaware of these spaces.

To better activate the spaces and create a new destination within the Northwoods, the Comprehensive Plan proposes enhancing the picnicking experience of the Promenade with new shade trees, opening up views toward Clear Creek, and integrating the existing Legacy Fountain with a new nature playscape.

## PROMENADE AND LEGACY FOUNTAIN LEGEND

- 1 Beltline Overlook on Axis with Legacy Fountain
- 2 Enhanced Views from Trellis Overlook
- 3 Activated Trellis Area with Lighting, Tables, and Additional Shading on the Trellis
- 4 Re-Activated Concessions
- 5 Renovated Legacy Fountain Splash Play
- 6 Legacy Fountain Playground Pods and Sensory/Textural Planting
- 7 Formal Trees on Promenade to Enhance Picnic Experience
- 8 Benches Along the Promenade
- 9 Open View Corridors Through Tree Pruning and Selective Removals
- 10 Public Art on Axis
- 11 Refurbished Restroom
- 12 Enhanced Entrance from Prado Drive
- 13 Enhanced Entrance from the Parking Deck





## PROGRAMMING RECOMMENDATIONS

The programming recommendations for the The Promenade keeps the space serving its role in hosting smaller community events, but plans for it to be a more welcoming space when events are not being held. Additional events could also be held at the sloped lawn and natural amphitheater in the Piedmont Commons expansion, depending on need.

## NEW PLAYGROUNDS

Near the existing Legacy Fountain, a new playspace with nature play elements would fit into the theme of the Northwoods and further activate Legacy Fountain as a splash play area, differentiating this playground from others at Piedmont Park. The play “pods” will serve all age groups and provide accessible play experiences for children of all abilities.

## VIEWS FROM THE PROMENADE AND LEGACY FOUNTAIN

When they were first built, the Promenade and Legacy Fountain were a destination for expansive views of the Park and the Clear Creek corridor. Since then, the surrounding trees have grown so dense that they nearly form a solid wall around the Promenade and Legacy Fountain, hiding the space from the rest of the park. The Comprehensive Plan proposes to open key view corridors again through selective tree pruning, clearing some understory growth, and selective removals.

## ACTIVATING THE TRELLIS

The existing trellis will remain, but with new string lighting and better picnic tables. The plan also recognizes that the trellis does not currently provide sufficient shade for the tables below. To create a more welcoming space, it will be retrofitted with additional wood slats.

With more activity at the Promenade and Legacy Fountain, the concessions stand could be re-activated with a small food and beverage function next to the tables at the trellis. The space could even be rented out for smaller events.

## PUBLIC ART

The paved area at the southern edge of the Promenade was originally intended to be a space for a public art installation. This plan aims to fulfill this, showcasing public art installations in the same location.



Sketch of Nature Play Features Around Existing Legacy Fountain



Nature Play Pods, Lakeshore Park, Knoxville TN (NBW)



Outdoor Classroom, Bok Tower Gardens, Lake Wales FL (NBW)



Benches On Path, Memorial Park, Houston TX (NBW)



Tables and Lighting Under Trellis