

The Meadow and Overlook

The Meadow provides expansive lawn space for picnicking, relaxing, and recreation, and often serves as a venue for community events and festivals. Drainage and lawn maintenance issues will be addressed in conjunction with a revised event schedule created in partnership with the City of Atlanta.

Additional benches will be added around the meadow loop, along with spaces for historical acknowledgment, and a potential new entrance from the Beltline to the east with restrooms, concessions, picnic tables, and multi-use plaza space overlooking the lawn.

MEADOW AND PARK TAVERN LEGEND

- 1 Reforested Area to Replace Existing Community Garden
- 2 Ramp Access from Park Drive to Lower Level Amenities and the Beltline
- 3 Additional Benches Around the Meadow
- 4 New Sidewalk Along Road from Charles Allen Drive
- 5 New Centrally-Located Restroom
- 6 Potential Location for Hippie Monument/Signage
- 7 Potential Location for African American Heritage Memorial
- 8 Meadow Overlook Plaza and Concessions
- 9 Beltline Connection and Entrance
- 10 Community Plaza with Movable Tables and Opportunity for Seasonal Event Space
- 11 Beltline Parking Lot to Remain
- 12 The Beltline



Meadow Overlook

NEW CONCESSIONS BUILDING

An added food/beverage concessions and restroom building at the existing knoll plateau between the Meadow and the Beltline will serve users of both the Meadow and the Beltline. Additional uses of this structure as a visitor center, Beltline rest stop, bike and scooter storage, or event space will be further explored and considered.

PICNIC PAVILION

At the edge of the knoll, a multi-use plaza space and picnic shelter with shaded picnic tables will overlook the Meadow and the Midtown Atlanta skyline. Additional pruning of the surrounding trees will further open up expansive views.

This space will have a potential dual use as event loading and storage during major festivals in the Park.



Picnic Shelter, Memorial Park, Houston, TX (NBW)

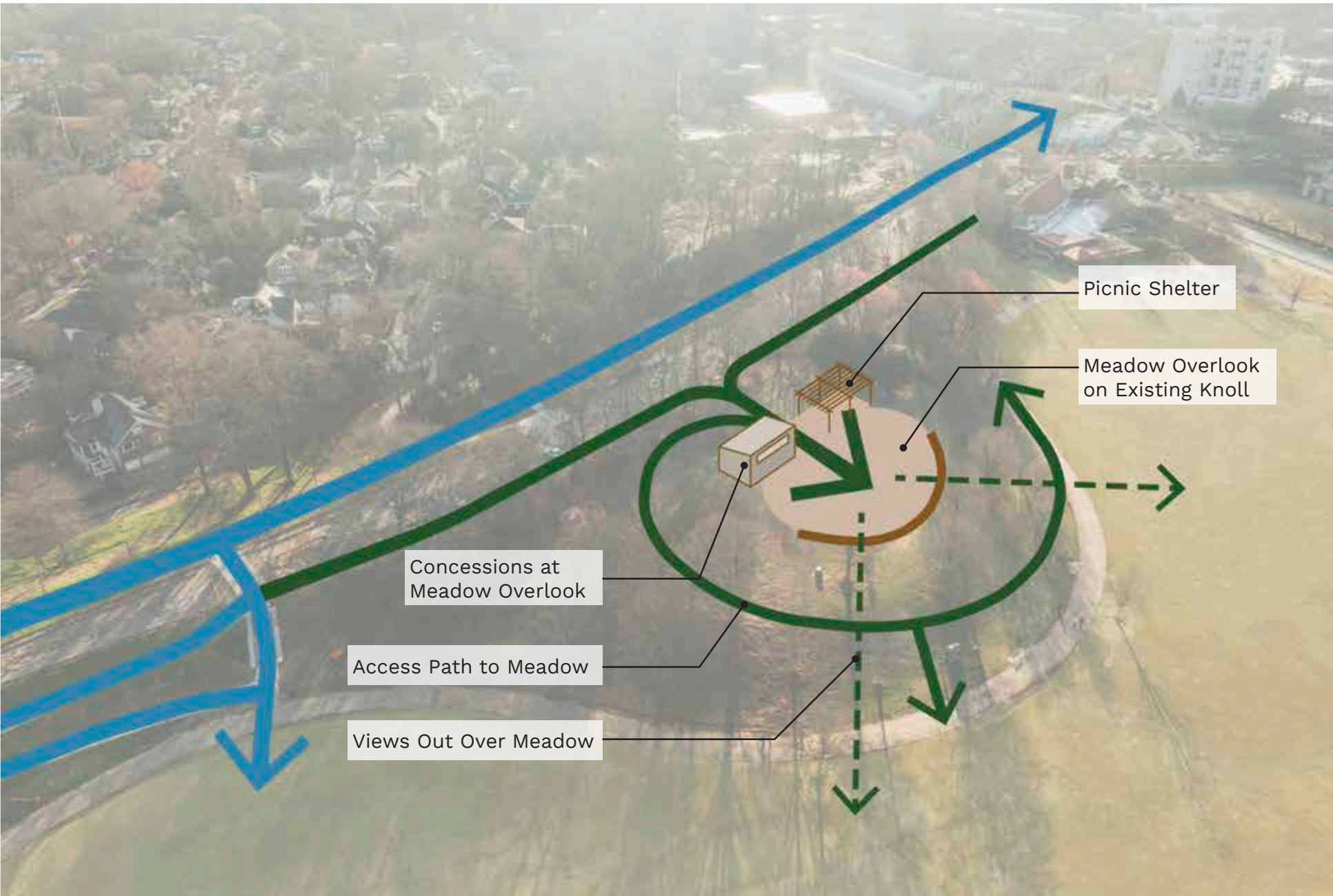


Diagram of Access and Improvements at the Meadow Overlook

The Meadow

HISTORIC ACKNOWLEDGMENTS

The Meadow at Piedmont Park has a deep history closely associated with the history of the City of Atlanta, making it a potential location for historical acknowledgment.

The site of the original ‘Negro’ building at the 1895 Cotton States International Exposition, near the current-day meadow next to Charles Allen Drive, could be an appropriate location for a potential African American Heritage Memorial under the existing large canopy trees. The memorial could acknowledge historical events relating to black American history in and around Piedmont Park from 1895 to the modern day.

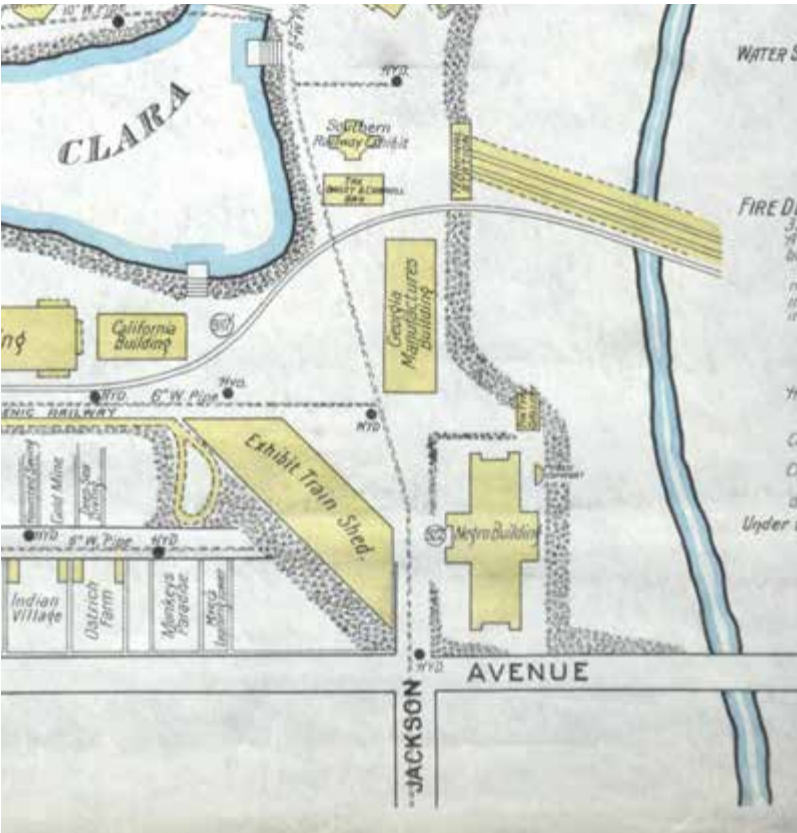
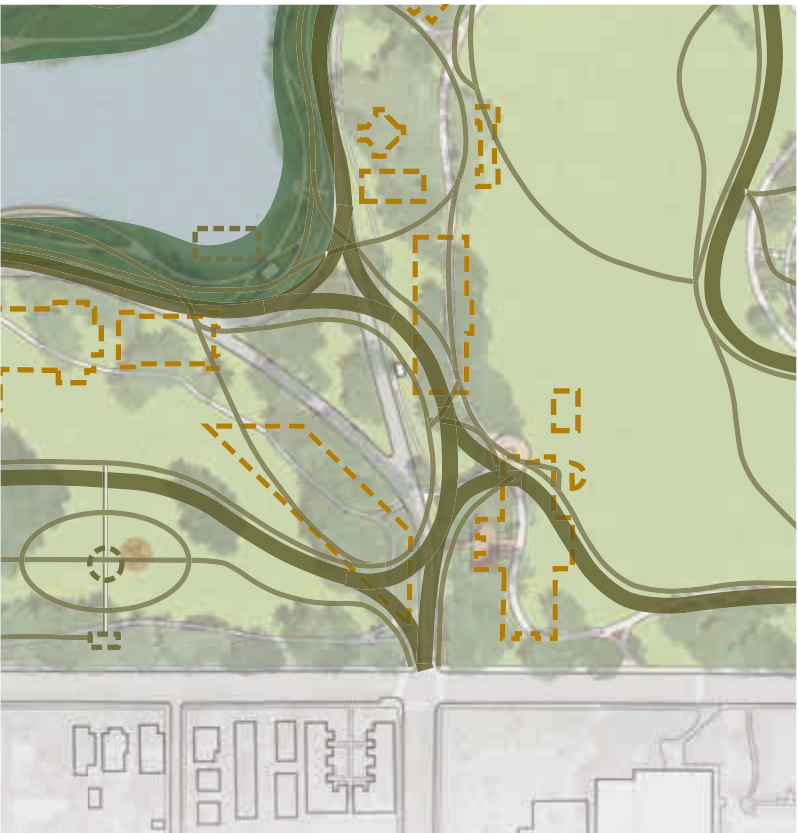
During the 1960s, thousands of counterculture hippies gathered around the Piedmont Park meadow for several years; the circular stone plaza overlooking the meadow could be a potential location for a ‘Hippie Monument’ acknowledging this history.

NEW SIDEWALKS

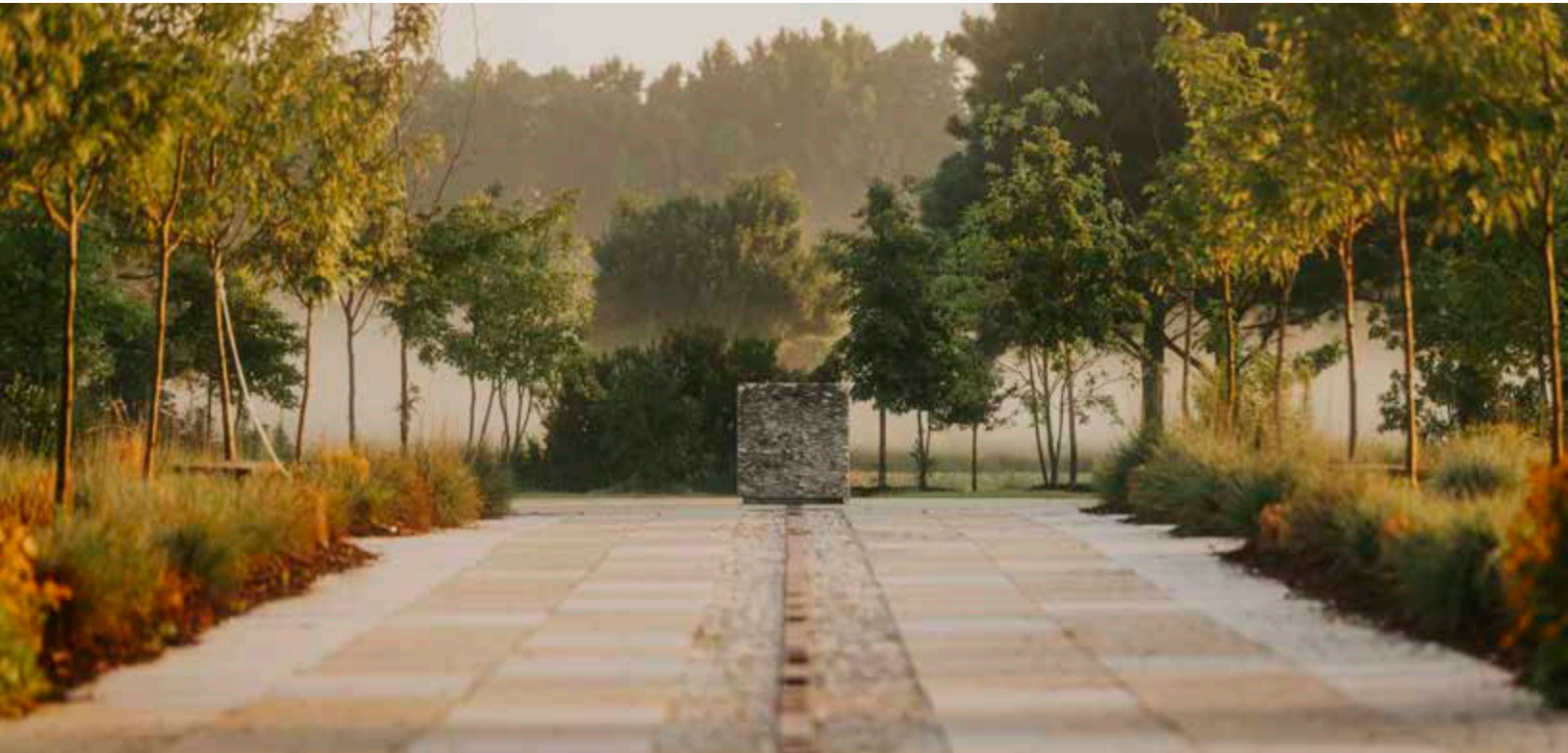
The sidewalk along the east side of Charles Allen Drive will continue further into the Park along the road and connect all the way to the sidewalk at the Park Drive bridge. Existing sidewalks should be repaved and regraded as needed.

NEW RESTROOM LOCATION RECOMMENDATION

The existing Charles Allen Drive Restroom is effective but could better serve all users by relocating further into the Park, to be adjacent to the Meadow, Oak Hill, and Lake Clara Meer; this relocation would also be better positioned to accommodate parkgoers at a future potential boathouse at the lake.



Potential for an African American History Acknowledgment or Memorial at the Site of the Original ‘Negro’ Building from the 1895 Cotton States International Exposition



Heritage Site, Memorial Park, Houston, TX (NBW)

Meadow History

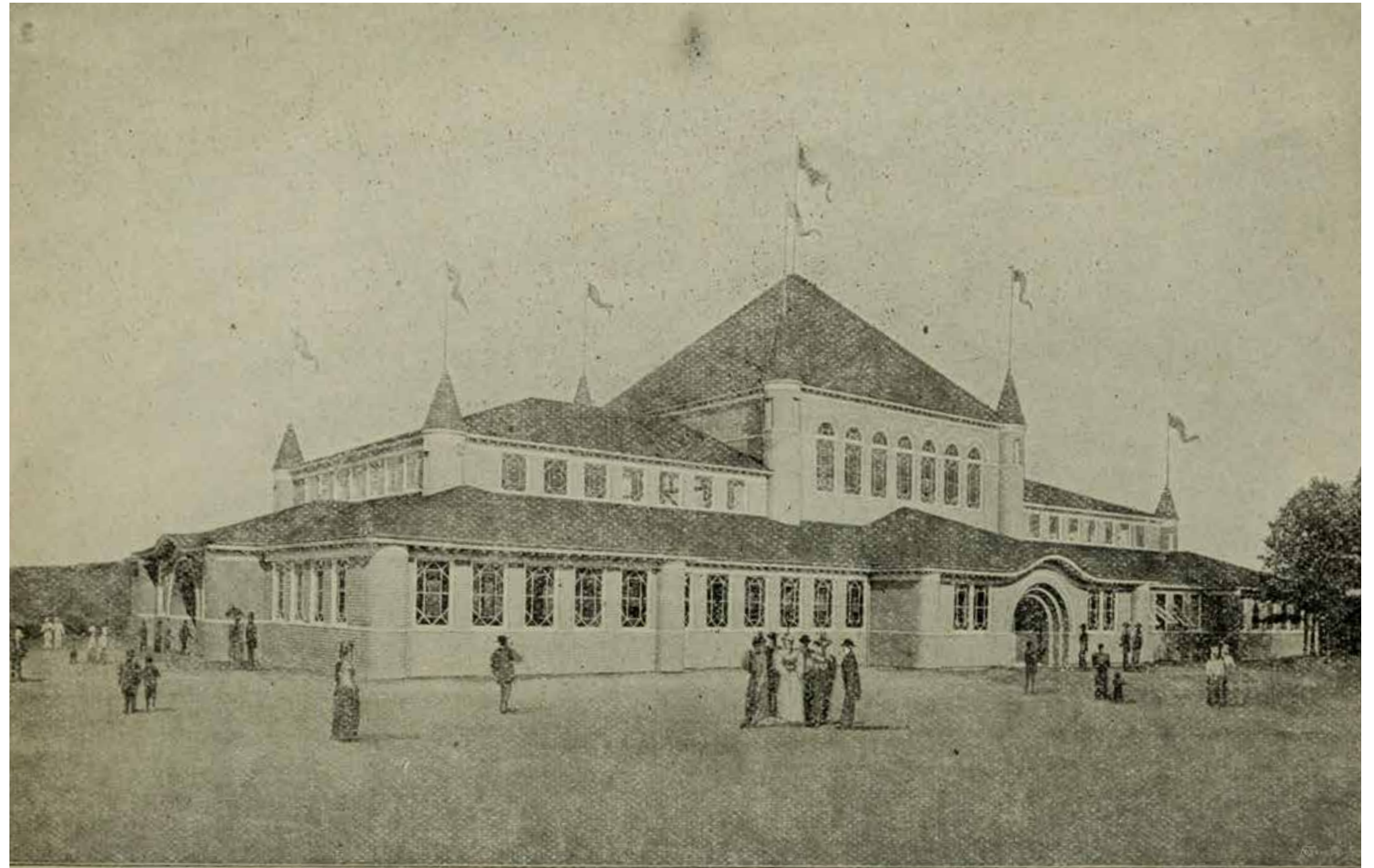


Booker T. Washington at the 1895 Exposition



Source: Atlanta Journal-Constitution

Lawrence Jefferson and Mary McMullen Become the First to Integrate Midtown High School Across the Street



The Negro Building at the 1895 Cotton States and International Exposition