

Clear Creek Walk

Clear Creek is often cited as one of the most special or desired experiences in Piedmont Park, yet many users are unaware of its existence. The Comprehensive Plan intends to provide an immersive creek experience through trails, overlooks, and boardwalks.

These trails along Clear Creek and adjacent to the Beltline will serve the dual purpose of providing new access near the creek while also creating alternative north-south routes separated from the high-speed traffic on the Beltline. All proposed features along and surrounding Clear Creek will be designed in coordination with the City of Atlanta Department of Parks and Recreation and Department of Watershed Management as well as Georgia Power.

CLEAR CREEK WALK LEGEND

- 1 Access to Piedmont Commons Expansion
- 2 Creek Overlook Points
- 3 Creek Classroom Deck with Views Under Existing Bridge
- 4 Creek Access Trails
- 5 The Canopy Walk
- 6 Overlook and Access to Canopy Walk and Trails on Axis with Legacy Fountain
- 7 Elevated Bridge Over Clear Creek
- 8 Pedestrian Boardwalk Continues Along Beltline
- 9 Connection to Monroe Entrance
- 10 Combined Sewer Overflow Facility and Culvert
- 11 Creek Overlook
- 12 Creek Restoration and Clean-Up Effort





Existing Conditions

Clear Creek Walk

BELTLINE PEDESTRIAN ROUTES

The Beltline segment along Clear Creek is currently the only way to access Piedmont Commons from the southern areas of Piedmont Park; therefore, this trail is used by pedestrians, bikes, scooters, maintenance vehicles, and more.

Many users have indicated concerns about this higher-speed traffic on the Beltline being unsafe for pedestrians and expressed the desire for alternate north-south routes for pedestrians only, as well as access trails closer to the creek.

CREEK CANOPY WALKS

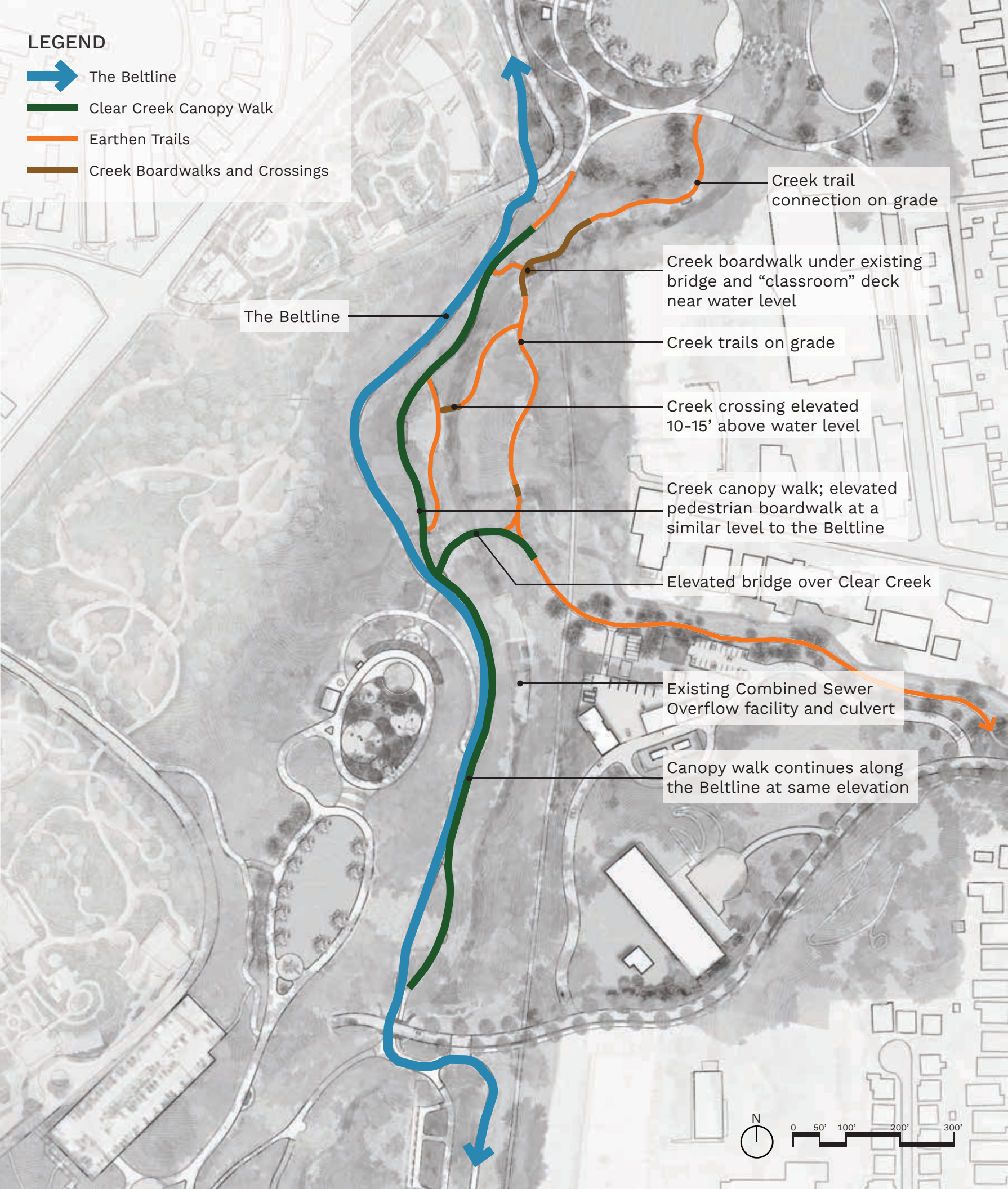
The creek canopy walk will be an accessible immersive experience through the Northwoods and the creek while also providing an alternate route to the high traffic of the Beltline. The boardwalk portions will be elevated above the groundplane vegetation and weave through existing large trees, providing views of the creek and Northwoods vegetation. Additionally, an elevated bridge over Clear Creek will connect Piedmont Park directly to the Monroe Drive entrance to the east.

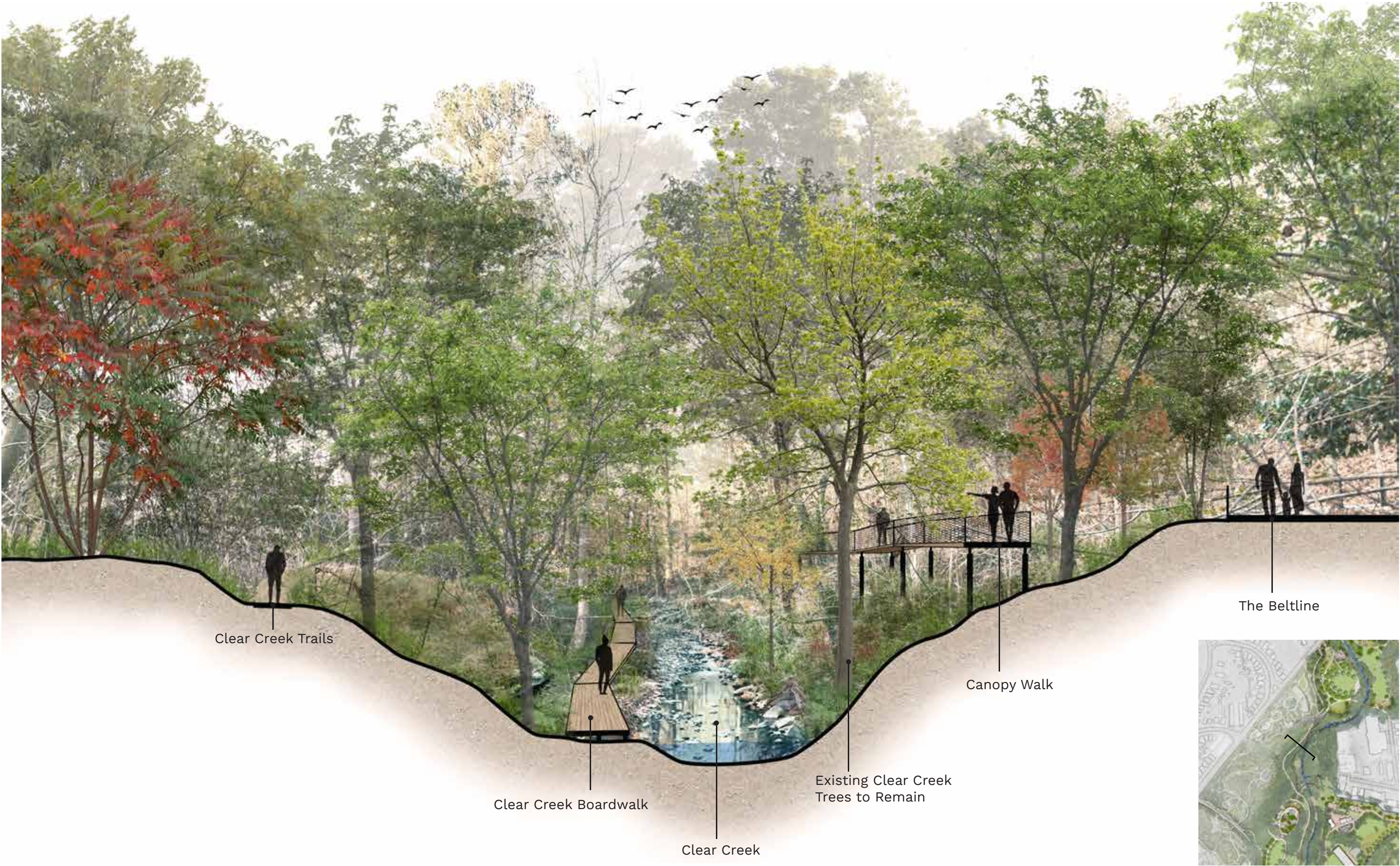
CREEK TRAILS AND CROSSINGS

As users move north and further from the Combined Sewer Overflow facilities, trails and crossings will provide access closer and closer to creek level. To the north, a boardwalk and deck on the water will be a space for small gatherings and learning in an immersive creek environment.

ACCESS TO MONROE DRIVE AND EVELYN STREET ENTRANCE

Currently, the entrance to Piedmont Park at Monroe Drive and Evelyn Street is the primary access point for park users arriving via car to the parking garage, but lacks reasonable pedestrian access. The Comprehensive Plan proposes creating additional access routes from Monroe Drive directly connecting to the creek experience and the rest of the park. The bridge over Clear Creek will route users entering from the point directly toward Legacy Fountain and the Promenade.





Clear Creek Walk

CREEK WATER QUALITY AND CLEAN-UP

Users have often noted odors coming from Clear Creek near Legacy Fountain and along the Beltline, due to the Combined Sewer Overflow facility on Clear Creek directly adjacent to the middle of Piedmont Park. While the Comprehensive Plan recommends exploring better mitigation of odors coming from these facilities and additional visual buffer, these efforts will not completely eliminate the odors from Clear Creek.

Therefore, access close to the Creek will be limited until users are far north enough to have some distance from the Combined Sewer Overflow facility. Any creek crossings near the Combined Sewer Overflow facility will be elevated higher above the creek to protect parkgoers.

Clear Creek needs a stream restoration and beautification effort to clean up trash and debris, and improve water quality for wildlife. Areas around the creek are overgrown and should be cleaned up and replanted with native riparian plantings.

OVERLOOK POINTS

The Comprehensive Plan proposes varying levels of experiences with Clear Creek, from access directly to the level of the Creek, to overlook points elevated above the creek for viewing at a distance.

These overlook points will provide spaces for park users and Beltline travelers to stop and observe the natural beauty of the Clear Creek corridor and vegetation.

TOPOGRAPHY AND ACCESS TO CLEAR CREEK

The topography around Clear Creek is very steep and will require some elevated boardwalks and canopy walks to provide access. The section rendering on the previous page will feature varying levels of trails and boardwalks along the Beltline and creek to provide parkgoers with a variety of creek experiences.

VARIETY OF PASSIVE RECREATION

The trails at Clear Creek will have a variety of surfaces and slopes to provide accessibility for users of all abilities. The creek canopy walk along the Beltline will be the flattest of the routes and provide ADA-accessible pedestrian-only routes to view the Creek. Then, the trails down to the creek level may be steeper at points and require stairs along the path.



Canopy Walk, Loudoun County, VA (NBW)



Low Boardwalk Trail, Walton County, FL (NBW)



The Ramble, Fayetteville, AR (NBW)



Variety of Trails and Creek Access Experiences, Fayetteville, AR (NBW)